

DERBY, FITZROY CROSSING AND HALLS CREEK

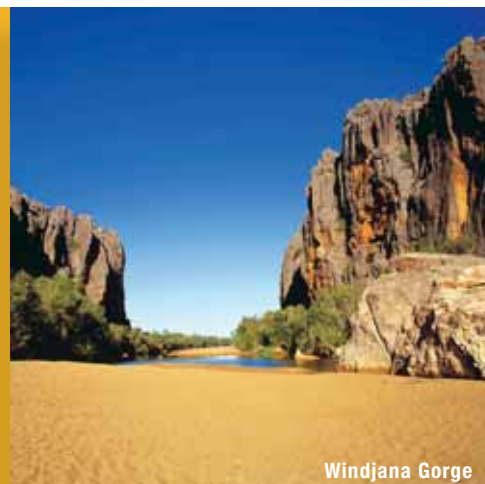
Derby is a western access point to the Gibb River Road and is the closest town to the Buccaneer Archipelago. Witness the Kimberley's incredible high and low tides at Horizontal Falls or at Derby Wharf, or visit the ancient Boab Prison Tree.

Fitzroy Crossing is a great base to explore Tunnel Creek and Windjana Gorge National Parks, and for Barramundi fishing on the Fitzroy River.

Halls Creek provides access to a number of natural attractions including the Bungle Bungles, Wolf Creek Crater and China Wall.

MUST SEE AND DO

- Take a scenic flight over the Buccaneer Archipelago
- See the Boab Prison Tree
- Explore Tunnel Creek and Windjana Gorge National Parks
- Take a trip to Geikie Gorge
- Fish for Barramundi on the Fitzroy River
- Visit Wolfe Creek Crater and the China Wall



Windjana Gorge

DERBY, FITZROY CROSSING, HALLS CREEK

Derby Lodge



Quiet, safe and family friendly, Derby Lodge is located in town close to the visitor centre, shops and swimming pool.

Town Centre 350m
Map 2 Page 45 Ref. 8

15 Clarendon Street, Derby

PROPERTY FEATURES:

- Guest kitchens (4)
- Barbecue area
- Bicycle hire
- Internet access (wireless)
- Internet facilities
- Guest laundry
- Parking
- Non smoking

ACCOMMODATION FEATURES:

- Air-conditioning
- Fan
- Refrigerator

Room serviced every 2 days

From **\$120** PER ROOM PER NIGHT

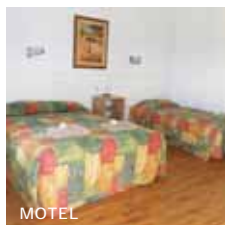
ROOM TYPE	ADULTS	1 NT	3 NTS	5 NTS
1 Apr 09 – 31 Mar 10				
Standard	1 to 3	120	360	600
Standard Family	1 to 4	120	360	600
Ensuite	1 to 4	150	450	750
Large Family	1 to 4	150	450	750

Children 0 to 11 years – free when sharing with an adult and using existing bedding. Cot free of charge.

Max capacity Standard – 3, Standard Family/Ensuite – 4, Large Family – 6.

DERDRB

Fitzroy River Lodge ★★★★★



Situated on the banks of the mighty Fitzroy River, at the lodge you can relax on 50 acres of natural bush with shady trees and landscaped gardens.

Town Centre 3.5km
Map 2 Page 45 Ref. 11

Lot 277 Great Northern Highway, Fitzroy Crossing

PROPERTY FEATURES:

- Pool
- Parking (undercover)

ACCOMMODATION FEATURES:

- Air-conditioning
- Fan
- Tea/coffee making facilities
- In-room movies (free)
- Internet access (broadband)
- Ironing facilities
- All rooms non smoking

Room serviced daily

From **\$142** PER ROOM PER NIGHT

ROOM TYPE	ADULTS	1 NT	3 NTS	5 NTS
1 Apr 09 – 31 Mar 10				
Safari Lodge	1 to 2	142	426	710
Motel	1 to 2	194	582	970
Riverview Studio	1 to 2	300	900	1500
Unit	1 to 4	304	912	1520
2 Bedroom Family Unit	1 to 6	388	1164	1940

Children 0 to 3 years – cot/bed charge payable direct. 4 to 12 years – adult prices apply.

Max capacity Safari Lodge/Unit – 4, Motel – 3, Riverview Studio – 2, 2 Bedroom Family Unit – 6.

FITFIZ

Kimberley Hotel, Halls Creek ★★★☆



Set in delightful gardens, the hotel features large rooms, a colonial style lounge, traditional saloon bar and restaurant.

Town Centre 500m
Map 2 Page 45 Ref. 12

Roberta Avenue, Halls Creek

PROPERTY FEATURES:

- Restaurant
- Bars (2)
- Room service (limited)
- Barbecue area
- Pool
- Internet café
- Guest laundry
- Parking

ACCOMMODATION FEATURES:

- Air-conditioning
- Fan
- Cable TV
- Hair dryer

Room serviced daily

From **\$164** PER ROOM PER NIGHT

ROOM TYPE	ADULTS	1 NT	3 NTS	5 NTS
1 Apr 09 – 31 Mar 10				
Corporate	1 to 2	164	492	820
Deluxe	1 to 2	197	591	985
Family	1 to 4	266	798	1330

Children 0 to 12 years – free when sharing with an adult and using existing bedding.

Max capacity Corporate/Deluxe – 3, Family – 6.

KIMWAU