

# PHILLIP ISLAND



Phillip Island is best known for its unique wildlife experiences and motor racing events, but the island also abounds with natural beauty, featuring ocean surf beaches, protected swimming beaches and tranquil wetlands. Enjoy a range of outdoor activities, from swimming, surfing, kayaking, parasailing and bird watching, to fishing and boating.

A must see experience is the penguin parade at Phillip Island Nature Park, where the little penguins return from the ocean to their burrows every day at dusk. Get up close to a koala at the Koala Conservation Centre and during the months of October to December, see Australia's largest colony of fur seals at Seal Rocks. Cowes is the main town on Phillip Island and offers a multitude of seaside dining and alfresco options. Cowes has beautiful, north facing beaches and the ferry to Stony Point and French Island as well as cruises to Seal Rocks depart from the jetty.

The highlights of Phillip Island's event calendar are the V8 Supercar Championship in September and the Australian Motorcycle Grand Prix held in October, attracting racing enthusiasts from around Australia.

## MUST SEE AND DO

- Witness the nightly penguin parade at Summerland Beach
- Take a cruise to see the fur seal colony at Seal Rocks (seasonal)
- Visit the Koala Conservation Centre
- Swim at one of Victoria's few north facing beaches
- Race around the Phillip Island Circuit on some hot laps with a professional driver

### 3 Park Pass – Phillip Island



Phillip Island is an island adventure featuring wildlife reserves, wetlands, walking tracks and breathtaking coastlines and home to the Penguin Parade, Koala Conservation Centre and Churchill Island Heritage Farm.

#### INCLUDES:

- Entry to Penguin Parade (general viewing area)
- Entry to Koala Conservation Centre
- Entry to Churchill Island Heritage Farm

#### PENGUIN VIEWING UPGRADE OPTIONS:

- Penguin Plus – a viewing platform for a closer view of the penguins
- Ultimate Penguin Tour – a secluded beach location among sand dunes to view the penguins



**Operates:** Daily from Phillip Island

**Open:** Penguin Parade: from 10am (penguins at dusk)  
Koala Conservation Centre: 10am – 5pm  
Churchill Island: 10am – 5pm

PRICE:	3 PARK PASS	3 PARK PLUS	3 PARK ULTIMATE
<b>Adult</b>	\$35	\$50	\$86
<b>Child</b> 4-14 years	\$18	\$25	N/A

Penguin Skybox and Private Penguin Parade Experience upgrade options also available.

PHILLIP ISLAND NATURE PARK

PHIPHI

### Seal Watching Eco Cruise



Witness one of Australia's largest wild Fur Seal colonies situated on Seal Rocks, just two kilometres off the rugged coast of Phillip Island. Drift within metres of thousands of seals and witness their natural environment first hand. Be captivated by these playful and inquisitive animals that regularly approach the boat for a closer look at you! Be enthralled by the beautiful coastline and learn the history of Phillip Island's western shoreline.

#### INCLUDES:

- Two hour wildlife eco cruise
- Afternoon tea
- Expert guides, commentary and nature notes
- Licensed bar (extra charge)
- Park entry fees

**Operates:** Mon, Wed, Fri, Sat and Sun from Cowes Jetty, Phillip Island

**Departs:** 2pm

**Returns:** 4pm

PRICE:	
<b>Adult</b>	\$67
<b>Concession</b>	\$60
<b>Child</b> 4-15 years	\$45
<b>Family</b> 2 adults and 2 children	\$185

WILDLIFE COAST CRUISES

WILPHI

### Optical Illusions, Mazes & Puzzles



Welcome to Phillip Island's most fun destination! Come and test your senses, logic and fun at A Maze'N Things, a unique and bizarre world of illusions, puzzles and mazes, providing stimulating entertainment for everyone. Visit the Illusion Rooms, built to confuse the eye and the mind; watch water flow uphill, get shrunk in the Shrinking Room, and even get your head chopped off! Be entertained in Puzzle Island, get lost in the mirror maze, fall off the Look Out! Slide or get dizzy in the Rotating Room. Make your way through The Maze, a unique labyrinth of twisting turns and confusing dead ends. Come and get lost!

#### INCLUDES:

- Entry to A Maze'N Things including Puzzle Island, The Maze, and Illusion Rooms
- Use of barbecue facilities and children's playground

**Open:** 10am – 5:30pm daily (extended hours during summer)

PRICE:	
<b>Adult</b>	\$18
<b>Child</b> 4-15 years	\$12

A MAZE'N THINGS

AMAPHI

## The Waves Apartments



Only a stones throw from the beach, within walking distance to the town centre, cafés and Cowes Jetty.

Beach 20m  
Map 7 Page 58 Ref. 1

1 The Esplanade, Cowes

### PROPERTY FEATURES:

- Barbecue area
- Breakfast room
- Games room
- Laundry service
- Parking

### ACCOMMODATION FEATURES:

- Air-conditioning
- Balcony or patio
- Spa bath
- Limited cooking facilities with microwave
- Ironing facilities
- Hair dryer

Apartment serviced daily

From **\$167** PER ROOM PER NIGHT

ROOM TYPE	ADULTS	1 NT	2 NTS	3 NTS
1 – 30 Apr, 1 Oct – 23 Dec 09, 1 Feb – 31 Mar 10				
Studio Apartment	1 to 2	186	372	558
1 May – 30 Sep 09				
Studio Apartment	1 to 2	167	334	501
24 Dec 09 – 31 Jan 10				
Studio Apartment	1 to 2	221	442	663

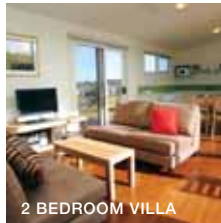
**Includes** Continental breakfast provisions of assorted cereal, juice, compote fruits and tea and coffee.

**Children** 0 to 11 years – free when sharing with an adult and using existing bedding.

**Max capacity** 3 adults or 2 adults/3 children.

WAVPHI

## All Seasons Phillip Island Eco Resort



2 BEDROOM VILLA

Nestled on 65 acres of undulating countryside overlooking farmland. The eco-resort offers superior accommodation and unrivalled facilities.

Beach 2km  
Map 7 Page 58 Ref. 2

2128 Phillip Island Road, Cowes

### PROPERTY FEATURES:

- Café ■ Bar ■ Barbecue area
- Internet facilities
- Pools (2 – 1 heated outdoor, 1 children's)
- Spa ■ Sauna ■ Gymnasium ■ Walkways
- Children's playground ■ Tennis courts (2)
- Guest laundry ■ Non smoking
- Parking

### ACCOMMODATION FEATURES:

- Corner spa bath (Studio Spas)
- Kitchen with microwave ■ CD/DVD player
- Internet access (broadband)
- 2 bathrooms in 3 Bedroom Villas
- Washer/dryer (except Studio Spas)
- Cable TV ■ Ironing facilities ■ Hair dryer

Apartment serviced weekly

From **\$169** PER ROOM PER NIGHT

ROOM TYPE	ADULTS	1 NT	2 NTS	5 NTS
1 Apr – 22 Dec 09, 1 Feb – 31 Mar 10				
Studio Spa (Sun-Thu)	1 to 2	169	338	845
2 Bedroom Villa (Sun-Thu)	1 to 4	239	478	1195
3 Bedroom Villa (Sun-Thu)	1 to 6	289	578	1445
Studio Spa (Fri-Sat)	1 to 2	N/A	378	N/A
2 Bedroom Villa (Fri-Sat)	1 to 4	N/A	518	N/A
3 Bedroom Villa (Fri-Sat)	1 to 6	N/A	618	N/A
23 Dec 09 – 31 Jan 10				
Studio Spa	1 to 2	N/A	N/A	1125
2 Bedroom Villa	1 to 4	N/A	N/A	1475
3 Bedroom Villa	1 to 6	N/A	N/A	1725

Other prices apply for V8 Supercars, Australian Motorcycle Grand Prix and World Superbike Championship.

**Children** 0 to 15 years – 1 child free when sharing with an adult and using existing bedding.

**Max capacity** Studio Spa – 2, 2 Bedroom Villa – 4, 3 Bedroom Villa – 6.

ALLPHI

## Silverwater Resort ★★★★★



3 BEDROOM

17 Potters Hill Road, San Remo

Set high on the rolling hills of San Remo, overlooking Phillip Island, Silverwater Resort is the perfect base to explore all this delightful region has to offer.

### PROPERTY FEATURES:

- Restaurant ■ Bar
- Café
- Room service (limited)
- Guest lounge
- Pools (2 – 1 outdoor heated in summer, 1 indoor heated)
- Spa ■ Steam room
- Tennis courts (3)
- Basketball/volleyball court (multi use)
- Gymnasium ■ Games room
- Laundry/dry cleaning service
- Guest laundry
- Parking ■ Non smoking

### ACCOMMODATION FEATURES:

- Air-conditioning
- Tea/coffee making facilities
- Mini bar items by order
- Kitchen with microwave and dishwasher (except Resort Rooms)
- Barbecue ■ Balcony
- In-room movies (pay to view)
- Cable TV ■ Washer/dryer
- Internet access (broadband)
- Ironing facilities
- Safe ■ Hair dryer

Room serviced mid stay for stays of 7 nights or more

Beach 2km  
Town Centre 2km  
Map 7 Page 58 Ref. 3

From **\$176** PER ROOM PER NIGHT



ROOM TYPE	ADULTS	2 NTS	3 NTS	5 NTS
1 – 9 Apr, 26 Apr – 4 Jun, 9 Jun – 10 Sep, 14 Sep – 14 Oct, 19 – 29 Oct, 4 Nov – 24 Dec 09, 26 Jan – 4 Mar, 9 – 31 Mar 10				
Resort Room	1 to 2	352	528	880
2 Bedroom	1 to 4	550	825	1375
3 Bedroom	1 to 6	600	900	1500
10 – 25 Apr, 5 – 8 Jun, 30 Oct – 3 Nov, 25 Dec 09 – 25 Jan, 5 – 8 Mar 10				
Resort Room	1 to 2	450	675	1125
2 Bedroom	1 to 4	650	975	1625
3 Bedroom	1 to 6	780	1170	1950
11 – 13 Sep, 15 – 18 Oct 09*				
Resort Room	1 to 2	N/A	1122	1870
2 Bedroom	1 to 4	N/A	1911	3185
3 Bedroom	1 to 6	N/A	2532	4220

**Children** 0 to 12 years – free when sharing with an adult and using existing bedding.

**Max capacity** Resort Room – 2, 2 Bedroom – 4 adults/1 child, 3 Bedroom – 6 adults/2 children.

SILPHI

### BONUS OFFER

- \* Receive full buffet breakfast per person daily.