



Pinnacle Lookout, The Grampians

The Grampians region is popular for outdoor activities offering a diverse array of wildlife, walking tracks and breathtaking scenery. The Grampians and Pyrenees wine regions are home to a number of leading winemakers including Seppelt.

Gippsland offers a diverse landscape from unspoilt beaches to enormous lakes and mountain ranges. Central Gippsland is gourmet country; dotted with wineries, cheese makers and farmers markets. Explore the historic old gold mining town of Walhalla, or the nearby Baw Baw and Tarra Bulga National Parks. Lakes Entrance is located on the edge of Ninety Mile Beach where the Gippsland Lakes meets the Southern Ocean and renowned for its seafood and seaside charm.

Enjoy historic towns, superb food and wine and endless activities along one of the world's greatest rivers, the mighty Murray. Mildura in the Murray region is known for its fresh local produce, orchards and wineries. It's also a great base to explore World Heritage Listed Mungo National Park.

Situated in Victoria's High Country, Milawa is a renowned gourmet region where you can sample the great array of local produce and excellent wineries and vineyards, including Brown Brothers.

## MUST SEE AND DO

- Explore the Grampians National Park
- Dine at Stefano's in Mildura
- Cruise on an old paddle steamer on the Murray River
- Learn about Walhalla's gold mining history on the historic town walk
- Visit Brown Brothers winery in Milawa

### Bellellen Homestead, The Grampians ★★★★★



A traditional bed and breakfast offering stunning views of the Grampians. Features an array of flowers and birds throughout the garden.  
Town Centre 12km  
Map 1 Page 56 Ref. 2

17 Bellellen Road, Black Range

#### PROPERTY FEATURES:

- Bar ■ Barbecue area
- DVD library
- Guest lounge
- Laundry service
- Non smoking ■ Parking

#### ACCOMMODATION FEATURES:

- Air-conditioning
- Tea/coffee making facilities
- Barbecue ■ Bathrobes
- Internet access (broadband)
- Cable TV
- CD/DVD player
- Hair dryer ■ Ironing facilities

Room serviced daily

From **\$229** PER ROOM PER NIGHT

ROOM TYPE	ADULTS	1 NT	2 NTS	3 NTS
1 Apr 09 – 31 Mar 10				
Queen	1 to 2	229	458	687
Twin	1 to 2	229	458	687

**Includes** Full cooked breakfast daily.

**Children** 0 to 1 years – not catered for.  
2 to 14 years – adult prices apply.

**Max capacity** 2.

**BELVIC**

### Quality Hotel Mildura Grand ★★★★★



A historic landmark in the heart of Mildura, opposite the Murray River, and home to the famed restaurant, Stefano's.  
Town Centre 200m  
Map 1 Page 56 Ref. 1

Seventh Street, Mildura

#### PROPERTY FEATURES:

- Restaurants (6)
- Room service (limited)
- Bar ■ Bottle shop
- Gymnasium
- Pool (heated outdoor)
- Spa ■ Sauna ■ Guest laundry
- Laundry/dry cleaning service
- Parking (limited undercover)

#### ACCOMMODATION FEATURES:

- Air-conditioning
- Internet access (wireless)
- In-room movies (free) ■ Mini bar
- Tea/coffee making facilities

Room serviced daily

From **\$203** PER ROOM PER NIGHT

ROOM TYPE	ADULTS	1 NT	2 NTS	3 NTS
1 Apr 09 – 31 Mar 10				
Standard	1 to 2	203	406	609

**Children** 0 to 11 years – free when sharing with an adult and using existing bedding.

**Max capacity** 3.

**GRAMQL**

## The Esplanade Resort and Spa ★★★★★



2 BEDROOM

### 1 The Esplanade, Lakes Entrance

The Esplanade Resort & Spa is superbly situated at the start of Lakes Entrance featuring water views, and located close to the city centre and the many tourist attractions of this picturesque town.

The resort features 134 rooms, suiting couples, friends and families with a range of hotel rooms and fully self-contained apartments. Major features of the resort are the indoor and outdoor pools, spa pool, full size tennis court, barbecue areas and the Iluka Day Spa, with a variety of treatments including relaxing facials and massages. The restaurant is situated next to the pool in alfresco dining style.

The Esplanade Resort & Spa is the perfect place to stay for a week, or to enjoy a night or two of pampering whilst exploring the region

#### PROPERTY FEATURES:

- Iluka Day Spa ■ Bar ■ Restaurant
- Room service (limited) ■ Barbecue area
- Pools (2 – 1 outdoor, 1 heated indoor) ■ Spa
- Tennis court ■ Internet access (wireless)
- Non smoking ■ Parking (undercover security)

#### ACCOMMODATION FEATURES:

- Water views ■ Balcony ■ Air-conditioning
- Kitchen with microwave and dishwasher (Apartments)
- Internet access (wireless)
- Washer/dryer ■ Ironing facilities
- Tea/coffee making facilities ■ Hair dryer

Hotel room serviced daily  
Apartment serviced weekly

Beach 1km  
Town Centre 250m  
Map 1 Page 56 Ref. 8

**S** From **\$160** PER ROOM PER NIGHT



ROOM TYPE	ADULTS	1 NT	2 NTS	5 NTS
1 – 9 Apr, 15 Apr – 4 Jun, 10 Jun – 29 Oct, 5 Nov – 23 Dec 09, 25 Jan – 4 Mar, 10 – 31 Mar 10				
Hotel	1 to 2	160	320	800
1 Bedroom	1 to 2	190	380	950
2 Bedroom	1 to 2	240	480	1200
10 – 14 Apr, 5 – 9 Jun, 30 Oct – 4 Nov, 24 Dec 09 – 24 Jan, 5 – 9 Mar 10				
Hotel	1 to 2	N/A	458	1145
1 Bedroom	1 to 2	N/A	640	1600
2 Bedroom	1 to 2	N/A	778	1945

5 night minimum stay applies 10 – 14 Apr, 24 Dec 09 – 10 Jan 10.

**Children** 0 to 2 years – cot/bed charge payable direct.  
3 to 10 years – adult prices apply.

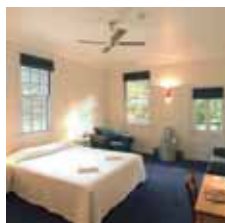
**Max capacity** Hotel – 2, 1 Bedroom – 3, 2 Bedroom – 4.

ERSVIC

#### BONUS OFFER

- Stay 3 nights and the 4th night is FREE, valid 1 May – 4 Jun, 10 Jun – 31 Aug 09.

## Walhalla's Star Hotel ★★★★★



Located in the heart of Walhalla historic township the hotel incorporates all modern amenities and facilities in stylish surroundings.

Town Centre 10m  
Map 1 Page 56 Ref. 7

Main Road, Walhalla

#### PROPERTY FEATURES:

- Air-conditioning
- Restaurant ■ Bar
- Guest lounge
- Book and CD library
- Internet facilities
- Wood fires ■ Non smoking

#### ACCOMMODATION FEATURES:

- Fan
- Heating
- Balcony or garden deck
- CD player
- Tea/coffee making facilities
- Opening windows

Room serviced daily

**From \$200** PER ROOM PER NIGHT

ROOM TYPE	ADULTS	1 NT	2 NTS	3 NTS
1 Apr 09 – 31 Mar 10				
Deluxe	1 to 2	200	400	600

**Includes** Light breakfast for two people daily.

**Children** 0 to 12 years – not catered for.

**Max capacity** 3.

WALWAL

## Lindenwarrah Country House Hotel ★★★★★



Situated on eight acres of vineyard in the heart of the High Country's Milawa Gourmet region, opposite Brown Brothers Winery.

Town Centre 200m  
Map 1 Page 56 Ref. 6

Milawa-Bobinawarrah Road, Milawa

#### PROPERTY FEATURES:

- Restaurant ■ Bar
- Room service (limited)
- Pool (solar heated)
- Internet access (wireless)
- Book and DVD library ■ Guest lounge
- Rooftop terrace ■ Bicycle hire
- Non smoking ■ Parking

#### ACCOMMODATION FEATURES:

- Air-conditioning ■ Mini bar
- Spa bath (Superior Spa Suites)
- Tea/coffee making facilities
- Internet access (wireless)
- Ironing facilities ■ Hair dryer

Room serviced daily

**From \$299** PER ROOM PER NIGHT

ROOM TYPE	ADULTS	1 NT	2 NTS	3 NTS
1 Apr 09 – 31 Mar 10				
Garden View	1 to 2	299	598	897
Sun Set Room	1 to 2	340	680	1020
Buffalo View	1 to 2	354	708	1062
Superior Spa Suite	1 to 2	374	748	1122

**Includes** Full breakfast daily.

**Children** 0 to 2 years – cot/bed charge payable direct.  
3 to 15 years – \$50 per child per night when sharing with an adult.

**Max capacity** 3 adults or 2 adults/2 children.

LCHVIC

#### BONUS OFFER

- Stay 3 nights and the 4th night is FREE.