

SPA COUNTRY AND GOLDFIELDS



Daylesford and the Macedon Ranges

Home to the greatest concentration of naturally occurring mineral springs in Australia and an array of wonderful spa centres, the Daylesford and Hepburn Springs area is noted as a centre for relaxation, health, wellbeing and pampering.

There are excellent galleries featuring works of local artists, plenty of antique shops to be explored, fine dining restaurants serving local gourmet good and beautiful lavender gardens at Lavandula Swiss Italian Farm. Spa Country is the perfect place for an indulgent and purely relaxing break away.

The Goldfields region is alive with history, arts and culture. Visit Ballarat and learn about the gold rush era at the historic attraction, Sovereign Hill. Set on a former gold mining site, Sovereign Hill is a fabulous outdoor museum and re-creation of life in Ballarat in the 1850s.

Take a break from exploring the goldfields at a stylish local café or restaurant, showcasing the fine local produce of the region, or sample the local wines from the Goldfield's three distinct wine regions. The region boasts outstanding galleries and gardens, and historic theatres.

MUST SEE AND DO

- Rejuvenate in the mineral springs at Hepburn Springs
- Indulge in a massage in Daylesford or the surrounding spa towns
- Pan for gold at Sovereign Hill
- See Sovereign Hill's 'Blood on the Southern Cross' evening show
- Visit Ballarat Fine Art Gallery, Australia's largest regional gallery

Novotel Forest Resort Creswick



Located on 150 acres of bushland in the heart of Victorian Spa Country, surrounded by Robert Allenby's 18 hole golf course.

Town Centre 2.5km
Map 1 Page 56 Ref. 4

1500 Midland Highway, Creswick

PROPERTY FEATURES:

- 24 hour reception ■ Day spa
- Golf course (18 hole)
- Fitness centre ■ Pool (heated)
- Restaurant ■ Bar
- Room service (24 hour)
- Laundry/dry cleaning service ■ Parking

ACCOMMODATION FEATURES:

- Air-conditioning ■ Balcony ■ Spa bath
- Cable TV ■ In-room movies (pay to view)
- Internet access (wireless)
- Mini bar ■ Tea/coffee making facilities
- Bathrobes (Suites) ■ Ironing facilities
- Hair dryer ■ Safe

Room serviced daily

S From **\$191** PER ROOM PER NIGHT

ROOM TYPE	ADULTS	1 NT	2 NTS	3 NTS
1 Apr – 31 May, 1 Aug 09 – 31 Mar 10				
Standard Room	1 to 2	231	462	693
Superior Room	1 to 2	327	654	981
Executive Room	1 to 2	360	720	1080
Superior Suite	1 to 2	393	786	1179
Executive Suite	1 to 2	427	854	1281
1 Jun – 31 Jul 09				
Standard Room	1 to 2	191	382	573
Superior Room	1 to 2	327	654	981
Executive Room	1 to 2	360	720	1080
Superior Suite	1 to 2	393	786	1179
Executive Suite	1 to 2	427	854	1281

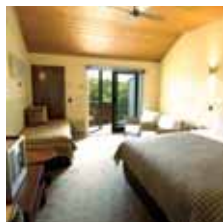
Children 0 to 15 years – up to 2 children free when sharing with 2 adults and using existing bedding.

Max capacity 2 adults/2 children. **NFRVIC**

BONUS OFFER

- Up to two children 0 to 15 years eat breakfast for FREE, (conditions apply).

Peppers Springs Retreat & Spa ★★★★★



Set in the heart of Victoria's Spa Country at Hepburn Springs and just over an hours drive from Melbourne.

Town Centre 4.4km
Map 1 Page 56 Ref. 3

124 Main Road, Hepburn Springs

PROPERTY FEATURES:

- Mineral Spa (with relaxation room, mineral water plunge pools, saunas and steam rooms)
- Room service (limited) ■ Restaurant
- Bar ■ Café ■ Plunge pool
- Yoga/Tai Chi ■ Billiard room
- Guest lounge ■ Parking

ACCOMMODATION FEATURES:

- Air-conditioning ■ Mini bar ■ CD player
- Spa bath (except Traditional rooms)
- Internet access (broadband)
- Tea/coffee making facilities
- Ironing facilities ■ Hair dryer

Room serviced daily

S From **\$238** PER ROOM PER NIGHT

ROOM TYPE	ADULTS	1 NT	2 NTS	3 NTS
1 Apr 09 – 31 Mar 10				
Traditional	1 to 2	238	476	714
Garden Spa	1 to 2	263	526	789
Hotel Spa	1 to 2	263	526	789
Superior	1 to 2	305	610	915
Terrace	1 to 2	419	838	1257

2 night minimum stay applies when stay includes a Friday or Saturday night, 3 – 4 Nov, 21 – 24 Dec and 28 – 31 Dec 09.

Children 0 to 12 years – free when sharing with an adult and using existing bedding.

Max capacity Traditional/Garden Spa/Hotel Spa – 3, Superior/Terrace – 2. **PSRVIC**

Sovereign Hill Lodge ★★★☆



Maggie Street, Ballarat

Ideally situated on-site at Sovereign Hill, Ballarat, a 90 minute drive from Melbourne. The Lodge is within close proximity of all Ballarat's attractions. An internationally acclaimed tourist attraction, Sovereign Hill brings to life the excitement of Australia's 1850s gold rush and provides a full day's entertainment with hands-on experiences that put visitors right in the action. There's real gold to be panned in the creek and the opportunity to be photographed with costumed ladies and gents on Main Street.

Visit the enterprising goldfields shopkeepers who produce and sell products unique to Sovereign Hill or watch how the blacksmith and wheelwright operated in a bygone era. The streets are lined with over fifty

19th century shops and businesses such as hotels, schools, a theatre, a bakery that makes wood fire oven produce and a confectionery factory where visitors watch boiled sweets being made. The Redcoat soldiers fire their powerful muskets every day and elegant horse drawn carriages provide a spectacular view of the township.

Ride in a horse-drawn carriage and be entertained by street performers or choose from two underground experiences and the opportunity to dress in the traditional 19th century costume. The Gold Museum, adjacent to Sovereign Hill Township, displays historical gold collections and carries some exciting jewellery ranges. Admission is included with Sovereign Hill entry.

PROPERTY FEATURES:

- Relive history all day and night
- Lounge
- Bar
- Short stroll to Sovereign Hill Township
- Fireplace
- Close to all of Ballarat's attractions
- Parking

ACCOMMODATION FEATURES:

- Air-conditioning
- Tea/coffee making facilities
- Ironing facilities
- Hair dryer

Room serviced daily

Town Centre 6km
Map 1 Page 56 Ref. 5

From **\$130** PER ROOM PER NIGHT



ROOM TYPE	ADULTS	1 NT	2 NTS	3 NTS
1 Apr 09 – 31 Mar 10 Standard	1	130	260	390
	2	150	300	450

Entry into Sovereign Hill not included.

Includes Light breakfast daily.

Children 0 to 4 years – cot/bed charge payable direct.
5 to 15 years – adult prices apply.

Max capacity 3 adults or 2 adults/2 children. **SHBLR**

Mercure Ballarat Hotel and Convention Centre ★★★★★



Enjoy the charm of this country hotel retreat nestled among landscaped gardens, located opposite the Sovereign Hill tourist attraction.

Town Centre 6km
Map 1 Page 56 Ref. 5

613 Main Road, Ballarat

PROPERTY FEATURES:

- Day spa ■ 24 hour reception
- Restaurants (2) ■ Bar
- Room service (24 hour)
- Gymnasium ■ Squash court
- Pool (heated outdoor)
- Barbecue area ■ Guest laundry
- Non smoking ■ Parking

ACCOMMODATION FEATURES:

- Air-conditioning
- Internet access (broadband and wireless)
- Mini bar ■ Tea/coffee making facilities
- Ironing facilities ■ Hair dryer

Room serviced daily

S **♿** From **\$180** PER ROOM PER NIGHT

ROOM TYPE	ADULTS	1 NT	2 NTS	3 NTS
1 – 30 Apr, 1 Jun – 30 Sep, 1 Dec 09 – 31 Jan 10 Standard	1 to 2	180	360	540
Superior	1 to 2	213	426	639
Deluxe	1 to 2	240	480	720

ROOM TYPE	ADULTS	1 NT	2 NTS	3 NTS
1 – 31 May, 1 Oct – 30 Nov 09, 1 Feb – 31 Mar 10 Standard	1 to 2	200	400	600
Superior	1 to 2	233	466	699
Deluxe	1 to 2	260	520	780

Children 0 to 15 years – free when sharing with an adult and using existing bedding.

Max capacity Standard/Deluxe – 2, Superior – 2 adults/1 child. **DOHBLR**

BONUS OFFER

- Up to two children 0 to 15 years eat breakfast for FREE when dining with paying adults in the hotel restaurant.



Sovereign Hill